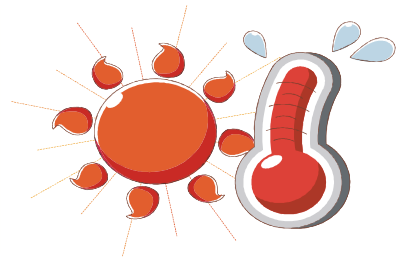


# August Crop Watch



Crop Watch is published by American Farm Bureau Insurance Services, Inc. and is intended for informational purposes only. Nothing contained herein can or should be interpreted to take precedence over policy language, Federal Crop Insurance Corporation/ Risk Management Agency regulation, and Underwriting or Loss Adjustment rules.

## INSIDE THIS ISSUE

Upcoming 2012 Fall Training	1
Conflict of Interest Disclosure	1
Claims Deadlines	2
Flood & Prevented Planting	2
Premium Billings	2

## AFBIS INFORMATION

Mailing Address:

PO Box 29627  
Raleigh, NC 27626

Underwriting Phone:

1-888-248-3588

Fax:

1-919-783-3520

Physical Address:

5171 Glenwood Avenue  
Suite 310  
Raleigh, NC 27612

Claims Phone:

1-800-965-5766

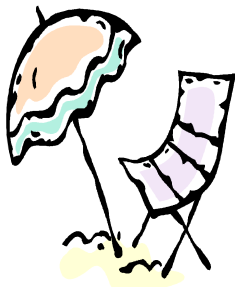
Office Hours:

8:15am-4:30pm

Eastern Standard Time

## UPCOMING 2012 FALL TRAINING

STATE	DATE	CLASS	LOCATION
Oklahoma	August 10th	Basic	OK Farm Bureau Home Office– Oklahoma City
Oklahoma	August 11th	Update	OK Farm Bureau Home Office– Oklahoma City
Kentucky	August 16th	Basic	KY Farm Bureau Home Office– Louisville
Kentucky	August 17th	Update	KY Farm Bureau Home Office– Louisville
Virginia	August 23rd	Basic	VA Farm Bureau Home Office– Richmond
Virginia	August 24th	Update	VA Farm Bureau Home Office– Richmond
Arkansas	August 31st	Basic	Cross County Farm Bureau– Wynn, Arkansas
Arkansas	September 1st	Update	Cross County Farm Bureau– Wynn, Arkansas



### Conflict of Interest Disclosure

All policies should be reviewed to determine if a familial, business, financial or legal relationship exists between the agent and the policyholder. A Conflict of Interest form must be submitted for any policy in which this applies. If a relationship is entered that would constitute a conflict of interest during the crop year, this must be disclosed within 15 days of entering the agreement.

### ATTENTION

AGENTS IN EVERY STATE ARE REQUIRED TO KEEP SIGNED DOCUMENTATION ON ALL FORMS WHEN INFORMATION IS SUBMITTED VIA THE WEB. THIS HAS BEEN AGREED TO WHEN ACCEPTING WEB PROCEDURE.

# CLAIMS DEADLINES

Crops	End of Insurance	Final Date to Report a Claim	States
Barley	7/31/11	8/15/11	NC
Oats	7/31/11	8/15/11	NC
Wheat	7/31/11	8/15/11	AR/KY/NC/ TN
Potatoes	8/15/11	8/30/11	NC
Barley	8/31/11	9/15/11	VA
Blueberries	9/15/11	9/30/11	VA

## **Flood & Prevented Planting**

Prevented planting coverage due to floods, hurricanes, or excess rain that occurs during the insurance period and prevents other producers from planting acreage with similar characteristics, is provided for most crops. Because conditions vary significantly between geographic areas, loss determinations are based on each producer's circumstances. Producers must first contact their crop insurance agent to report a prevented planting loss.

The prevented planting guarantee for most crops is 60% of the production guarantee for timely planted acreage. For both yield and revenue protection, prevented payments are based on the projected price.

### **If a Producer is Prevented from Planting by the Final Plant Date**

What choices do producers have if they are prevented from planting by the final plant date?

- Plant the insured crop during the late planting period, if applicable. The late planting period is generally 25 days after the final plant date but varies by crop and area, as specified in the policy. For most crops, the timely planted production guarantee is reduced 1% per day for each day planting is delayed after the final plant date.
- Plant the insured crop after the late planting period (or after the final planting date if a late planting period is not applicable), in which case the insurance guarantee will be the same as the insurance guarantee provided for prevented planting coverage.
- Leave the acreage idle (black dirt) and receive a full prevented planting payment,
- Plant a cover crop and receive a full prevented planting payment (but do not hay or graze this cover crop before November 1st or otherwise harvest it at any time), or
- Plant another crop (2nd crop) after the late planting period or after the final planting date, or hay or graze a cover crop after the end of the late period or after the final planting date but before November 1st, or otherwise harvest it at any time, and receive a prevented planting payment equal to 35% of the prevented planting guarantee

### *PREMIUM BILLING*

Premium billings for MPC1 premium due July 31st were mailed again to the insured on August 5th. This is the 2nd of 4 billings.

Agents should access the "Policy Due List" feature after logging on to the Agent Options page of the AFBIS, Inc website ([www.afbisinc.com](http://www.afbisinc.com)). This will keep agents up to date on premium payments posted.

If an insured brings a premium payment to your office, it must be sent to the Raleigh Office. The check should be made payable to AFBIS, Inc. If you have any questions about premium, please call the Raleigh Office.

All agents, prior to writing ANY business for the 2012 crop year, MUST have SIGNED & RETURNED the following Quality Control Forms:

- Conflict of Interest
- Non-Disclosure Statement
- Controlled Business Form
- Anti-Rebating & Suit Forbearance Acknowledgement Form

*\*All forms must include the Privacy Act*

